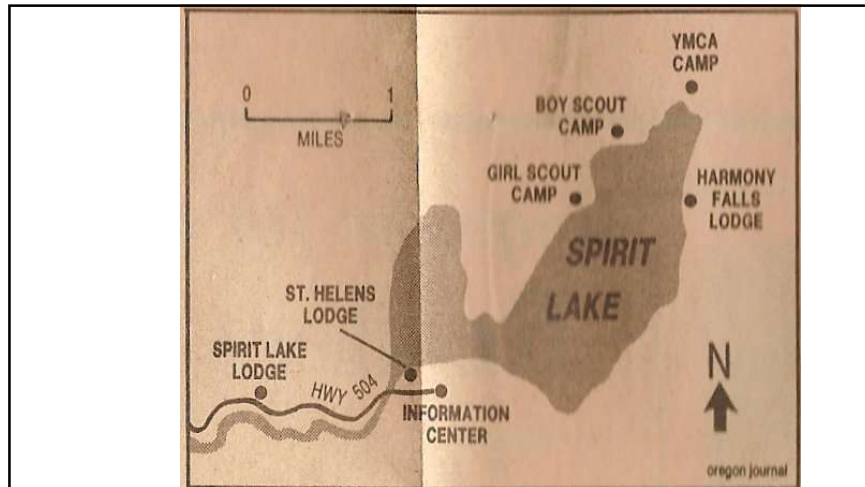


Mr. Aitken

Washington State History

- Mount St. Helens





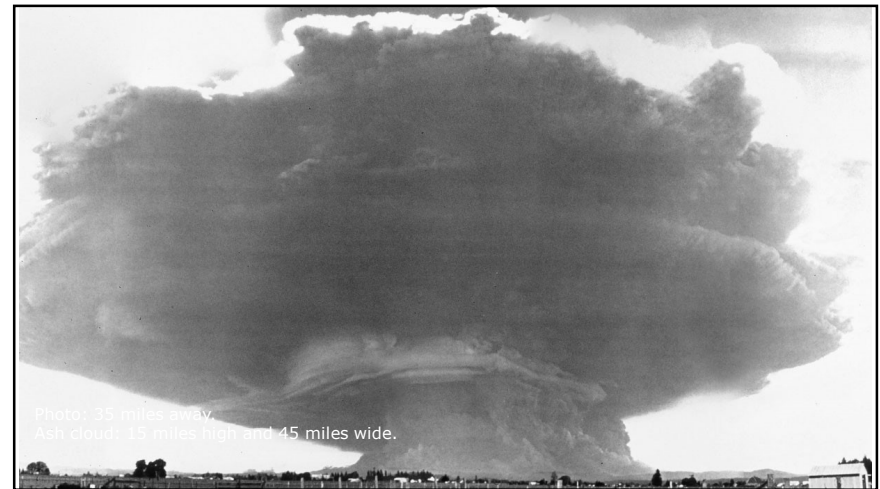
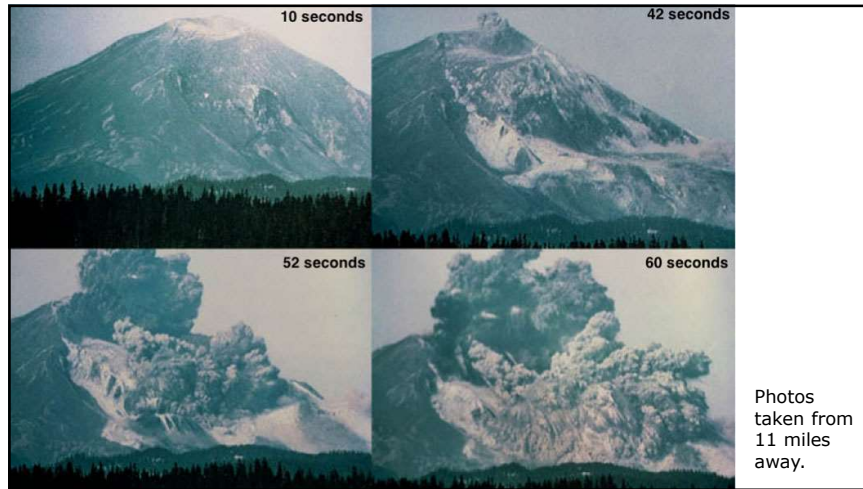
Mt. St. Helens

- The eruption was not a surprise.
- Many small earthquakes occurred for months before the eruption.
- A large bulge had grown on the north side of the mountain.
- Scientist knew it would erupt, just not exactly when or how big it would be.



Mt. St. Helens

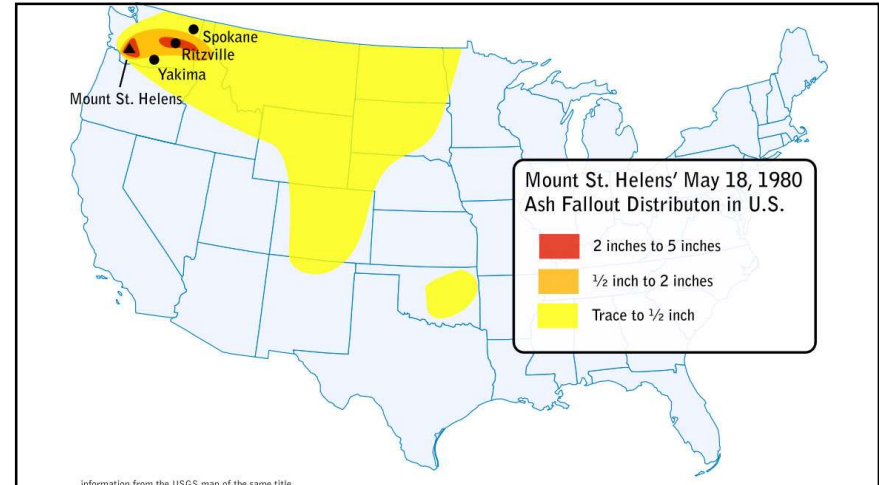
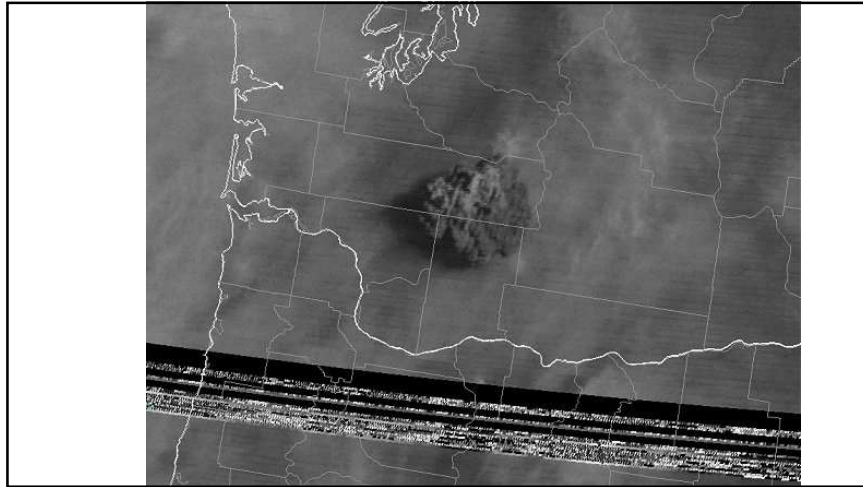
- (3:14) <https://youtu.be/AYla6q3is6w>
- (14:32) https://youtu.be/DXyfrS_pnn0
- (22:11) <https://youtu.be/forP1N1XwYE>



Mt. St. Helens

May 18, 1980

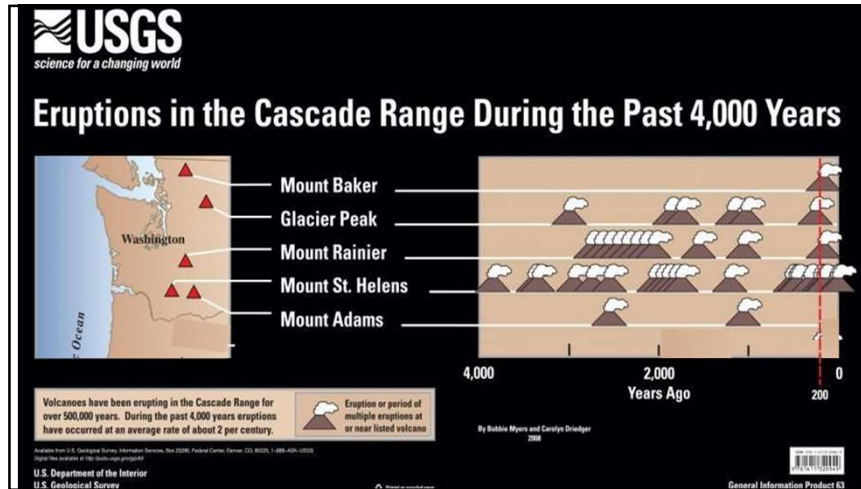
- Largest landslide ever recorded.
- Initial eruption lasted 10+ hours.
- 540,000,000 tons of ash fell to the ground, over 11 states (and 4 Canadian provinces).
- Within 3 hours (at noon), Spokane went dark.



Mt. St. Helens

- More than one eruption.
- The mountain erupted 5 more times that year (none as big as May 18).
- 21 periods of "eruptive activity" over the next 10 years. (Mostly dome-building and steam venting.)
- New lava dome formed from 2004-2008.





Mt. St. Helens

- Based on what you have learned about the eruption of Mt. St. Helens, what do you think the hazards of an eruption of other Washington volcanoes might be?

Mt. St. Helens

- Lahar: massive mudflow caused by melting glaciers and snow during an eruption.



